



**HELLENIC ELECTRICITY MARKET OPERATOR S.A.**  
Information: M. Asimakopoulou (masimakopoulou@lagie.gr)

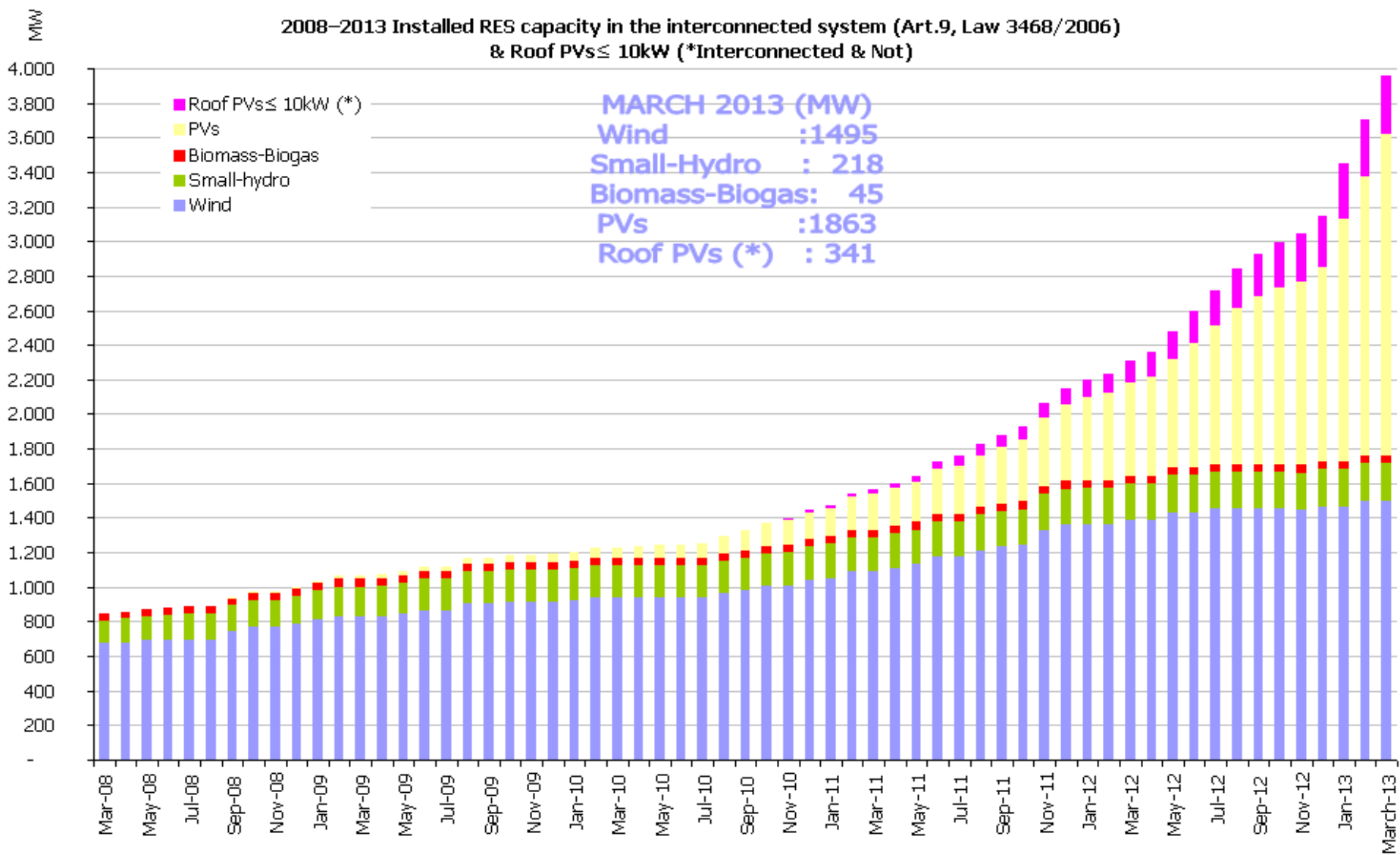
## **Renewable energy sources and CHP**



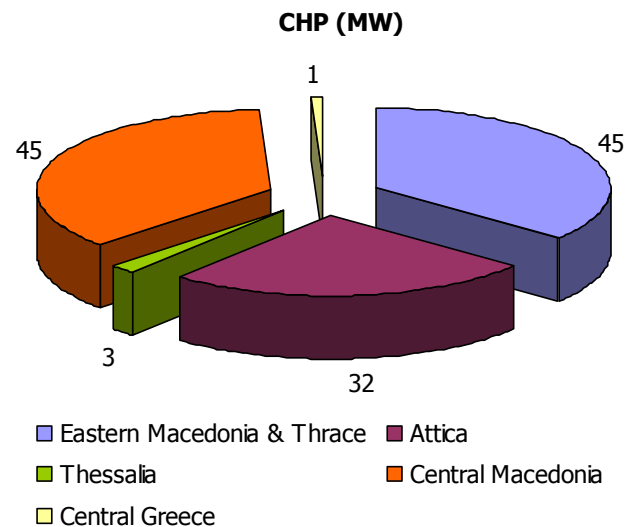
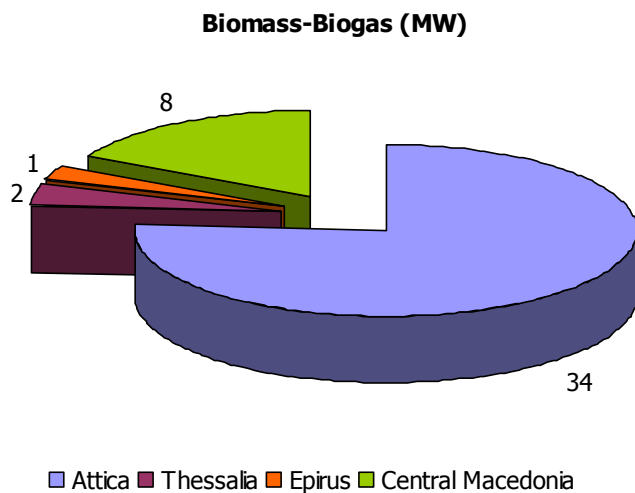
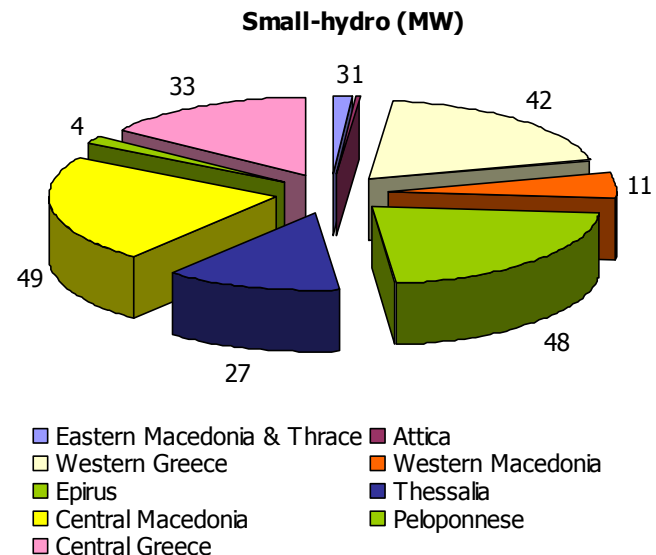
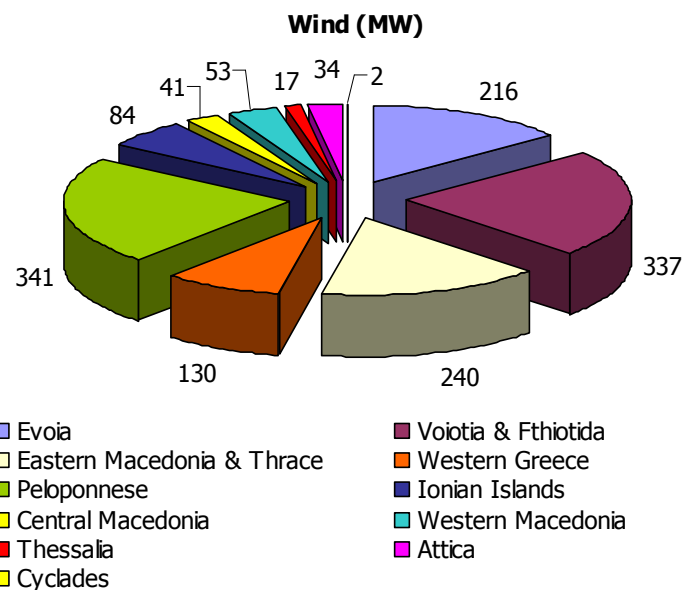
### **Monthly Bulletin**

### **March 2013**

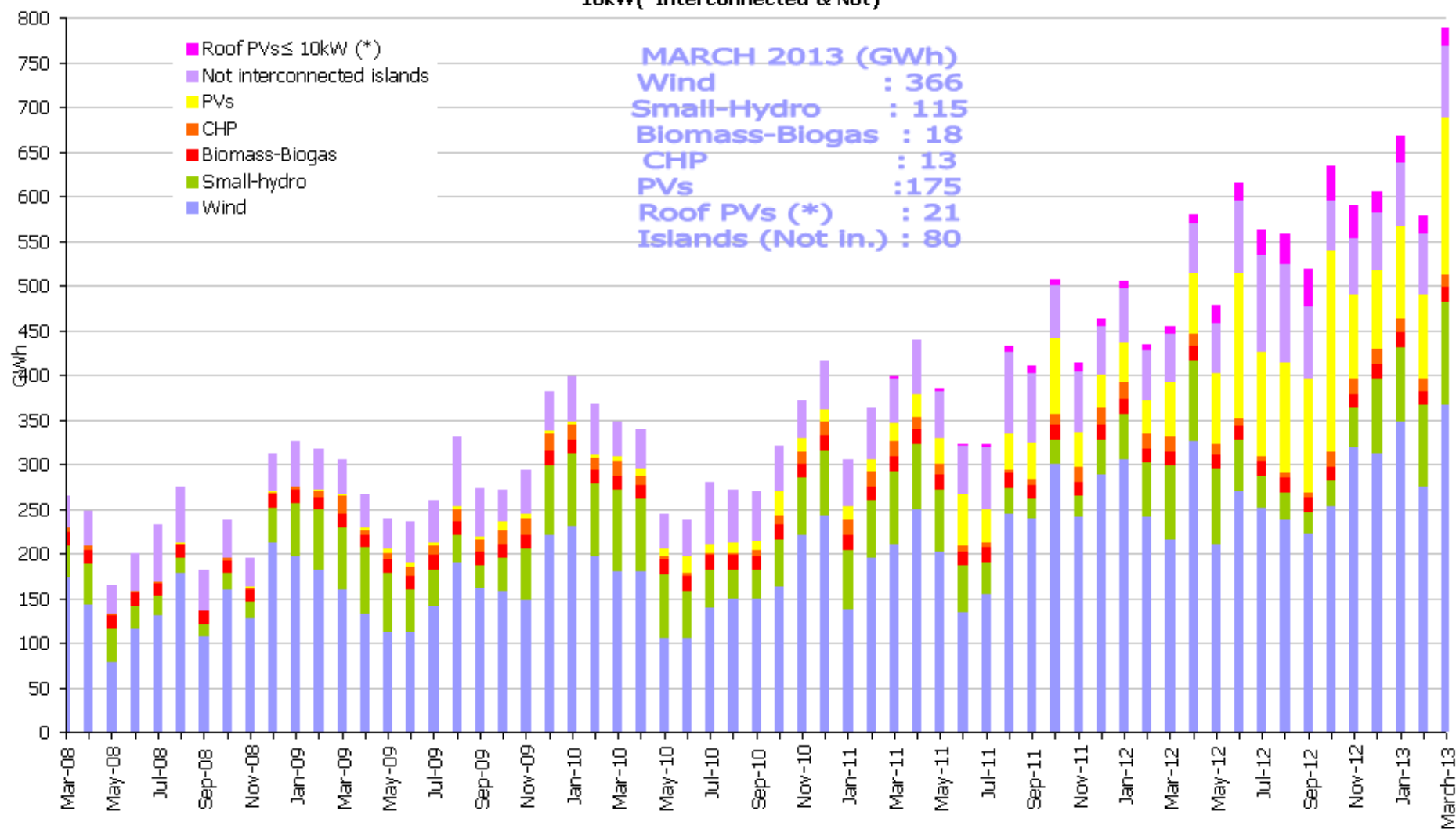
2008–2013 Installed RES capacity in the interconnected system (Art.9, Law 3468/2006)  
& Roof PVs ≤ 10kW (\*Interconnected & Not)



## 2013 Regional distribution of RES and CHP stations in the interconnected system (Art.9, Law 3468/2006)



2008-2013 Total Greek electricity generation from RES and CHP (Art.9 and 10, Law 3468/2006) & Roof PVs ≤ 10kW(\*Interconnected & Not)

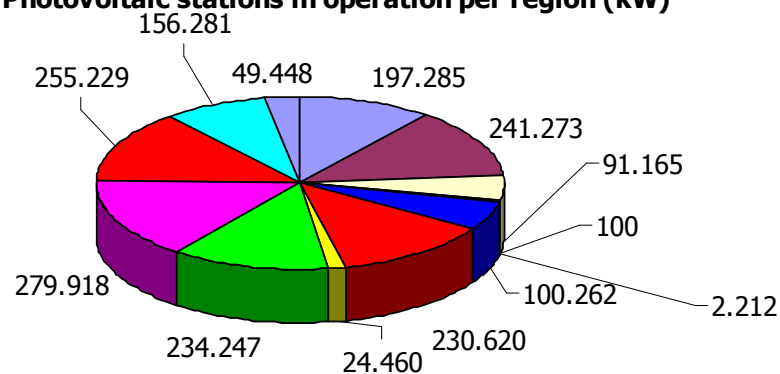


**Electricity generation from RES and CHP in the interconnected system 2013 (Article 9, Law 3468/ 2006)**

Month	Wind			Small-hydro			Biomass-Biogas			CHP		Total	
	Energy Generated (MWh)	Installed Capacity (MW)	Capacity Factor (%)	Energy Generated (MWh)	Installed Capacity (MW)	Capacity Factor (%)	Energy Generated (MWh)	Installed Capacity (MW)	Capacity Factor (%)	Energy Generated (MWh)	Installed Capacity (MW)	Energy Generated (MWh)	Installed Capacity (MW)
January	346.617	1.465,82	31,78%	83.426	217,88	51,47%	17.828	44,75	53,55%	15.385	90,07	463.256	1.819
February	275.305	1.494,72	27,41%	90.172	217,88	61,59%	16.145	45,31	53,02%	13.181	90,07	394.803	1.848
March	366.294	1.494,72	36,47%	114.501	217,88	78,20%	18.104	45,31	59,46%	13.311	90,07	512.210	1.848
April												-	-
May												-	-
June												-	-
July												-	-
August												-	-
September												-	-
October												-	-
November												-	-
December												-	-
<b>Total (MWh)</b>	<b>988.216</b>			<b>288.099</b>			<b>52.076</b>			<b>41.878</b>		<b>1.370.269</b>	

Photovoltaic stations of the interconnected system 2013 (Article 9, Law 3468/2006)				
Month	Energy generated (MWh)	Capacity (MW)		
		Total with PPA	In operation	Capacity Factor (%)
January	102.627	2.990	1.404	9,83%
February*	94.551	3.022	1.615	8,71%
March	175.118	3.027	1.863	13,99%
April				
May				
June*				
July				
August				
September				
October*				
November				
December				
Energy generated in 2012 (MWh)	372.297,13	* Months of energy measurement for Low Voltage PVs		

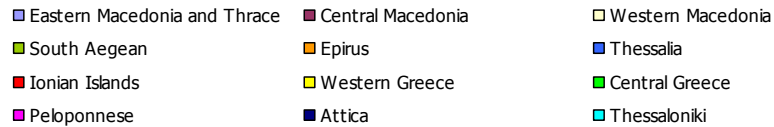
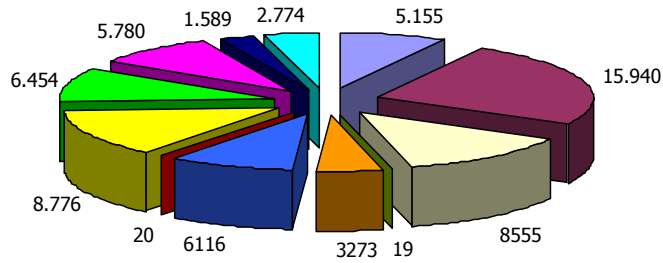
**Photovoltaic stations in operation per region (kW)**



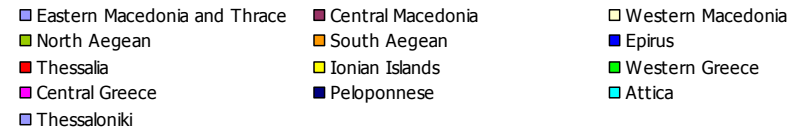
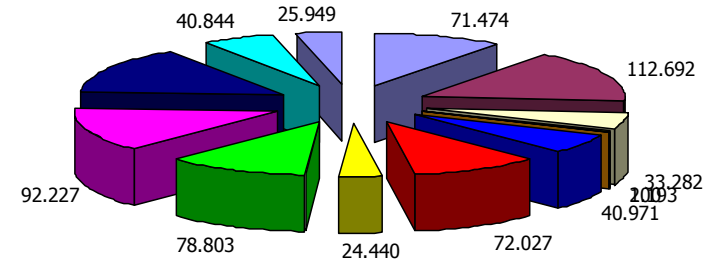
- Eastern Macedonia and Thrace
- North Aegean
- Thessalia
- Central Greece
- Thessaloniki
- Central Macedonia
- South Aegean
- Ionian Islands
- Peloponnese
- Western Macedonia
- Epirus
- Western Greece
- Attica

## First stage of deployment program of PV stations – Distribution of PV stations in operation per region (kWp)

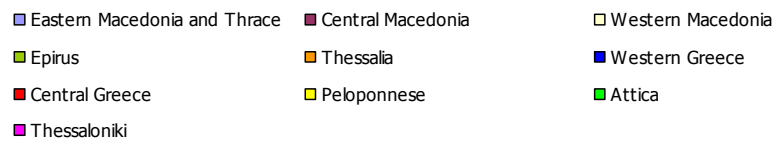
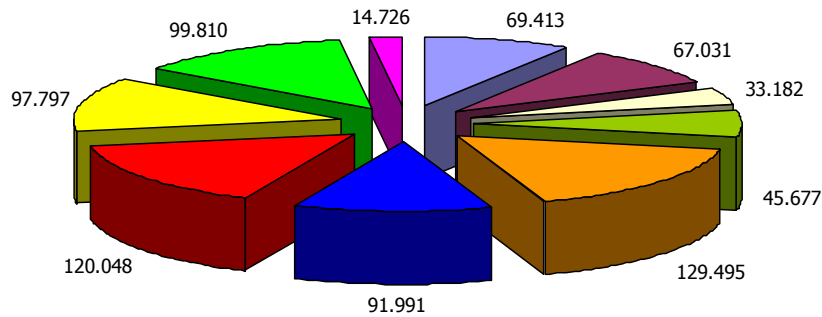
**PV ≤ 20 kWp**



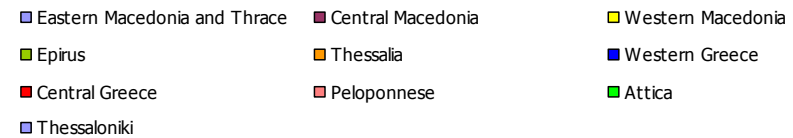
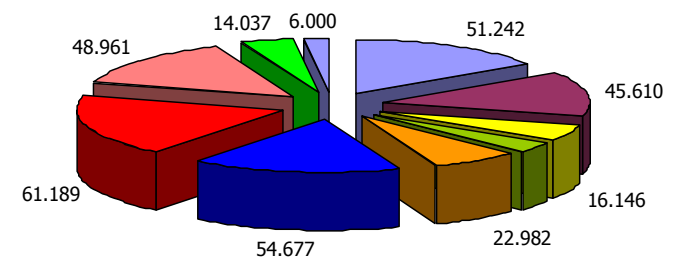
**20 kWp < PV ≤ 150 kWp**



**150 kWp < PV ≤ 2 MWp**



**PV > 2 MWp**

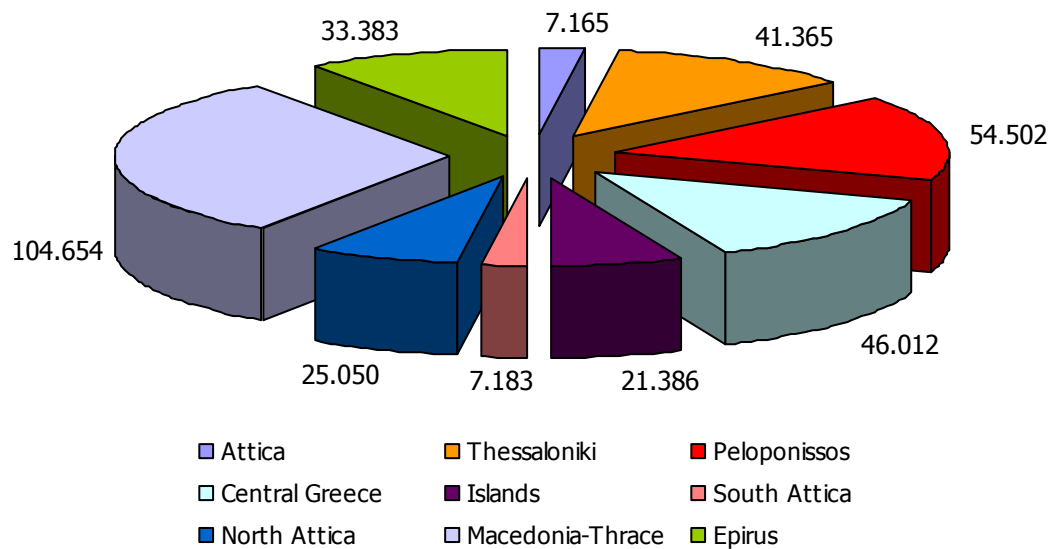


## Roof PVs ≤ 10kW

ROOF PVs ≤ 10kW		
	ENERGY (MWh)*	CAPACITY (MW)
January	30.260	316
February	20.567	329
March	21.400	341
April	-	-
May	-	-
June	-	-
July	-	-
August	-	-
September	-	-
October	-	-
November	-	-
December	-	-
Total Energy (MWh)	72.227	

\* The energy generated refers to the monthly measured energy by the Distribution Network Operator.

ROOF PVs - Regional distribution (kW)





### Parameters of RES & CHP Billing

